

LINEAR MOTION TECHNOLOGY

Ordering information

ARC	U	15	M	N	-R	B	2	Z	C	V1	P	-1480L	-20	-20	II	/J	
Customization code																	
Number of rails on the same moving axis																	
End hole pitch (mm)*																	
Starting hole pitch (mm)*																	
Rail length (mm)																	
Accuracy grade : UP, SP, P, H, N																	
Preload class : VC, V0, V1, V2																	
C: with ball chain (Available for size 15,20,25,30,35 and 45)																	
Z: with lubrication storage pad																	
Block quantity																	
Seal type : B: Low friction S: Standard																	
R: six mounting holes Unlabeled: Standards																	
Block length : L: long N: standard S: short																	
Block width : M: standard F: flanged																	
Block type : 15, 20, 25, 30, 35, 45, 55																	
U: rail (tapped from the bottom)																	
Product type : ARC: automation series HRC/ERC: heavy load series																	

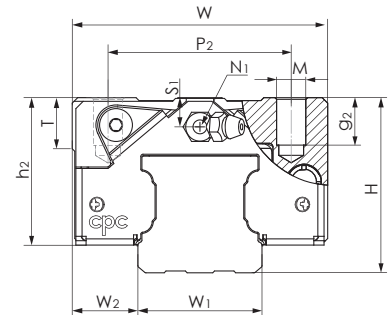
Customization code(The meaning of suffix characters)

J : slide rail connection	R : special process for rail	SG : installation of side grease holes and set screws
G : customer designated lubricant	VD : customized designated preload pressure value	PC : with plastic caps for counter holes on the rail
I : with Inspection report	OA : block install with grease nipple by cpc (Please contact cpc for direction of grease nipple installation)	MPC : with Metal-Plastic Caps for rail mounting holes.
S : special straightness requirements for rail	DE : reference edges of block and rail on opposite sides	TR : bolt-Hole without chamfer
B : special processing for block	HN : external HNBR seal with metal scraper	
BL : with extension and contraction support layer.		
SN : external NBR seal with metal scraper		
BR : black chrome coating treatment on the rail	CR : clear chrome coating treatment on the rail	RR : raydent coating treatment on the rail
BB : black chrome coating treatment on the block	CB : clear chrome coating treatment on the block	RB : raydent coating treatment on the block
BRB : black chrome coating treatment on the block and rail	CRB : clear chrome coating treatment on the block and rail	RRB : raydent coating treatment on the block and rail
SB : with stainless steel ball bearings	NR : nickel coating treatment on the rail	NB : nickel coating treatment on the block
NRB : nickel coating treatment on the block and rail		

Note: For special process or customized requirement, please contact **cpc** for more information.

* The end pitch of the rail should not exceed the 1/2 of original pitch, this is to avoid the misfit of the rail to the workbench.

Dimensions Table



ARC MS Series

Model Code	Mounting Dimensions		Rail Dimensions(mm)				Block Dimensions(mm)										
	H	W ₂	W ₁	H ₁	P	Dx dx g ₁	W	L	L ₁	h ₂	P ₁	P ₂	P ₃	M x g ₂	M ₁	T	N ₁
ARC 15 MS	24	9.5	15	15	60	7.5x4.5x5.3	34	41.2	26	20.7	-	26	-	M4x7	-	6	M3x6.5
ARC 20 MS	28	11	20	20	60	9.5x6x8.5	42	49.2	32.2	23	-	32	-	M5x7	-	8	M3x7.5
ARC 25 MS	33	12.5	23	23	60	11x7x9	48	57.4	38.4	27	-	35	-	M6x9	-	8	M6x7.5
ARC 30 MS	42	16	28	27	80	14x9x12	60	68	44	35.2	-	40	-	M8x10	-	12	M6x8.5

ERC MS Series

ERC 25 MS	36	12.5	23	23	60	11x7x9	48	57.4	38.4	30	-	35	-	M6x9	-	8	M6x7.5
-----------	----	------	----	----	----	--------	----	------	------	----	---	----	---	------	---	---	--------

ARC MN Series

ARC 15 MN	24	9.5	15	15	60	7.5x4.5x5.3	34	55.5	40.3	20.7	26	26	-	M4x7	-	6	M3x6.5
ARC 20 MN	28	11	20	20	60	9.5x6x8.5	42	69	52	23	32	32	-	M5x7	-	8	M3x7.5
ARC 25 MN	33	12.5	23	23	60	11x7x9	48	81.2	62.2	27	35	35	-	M6x9	-	8	M6x7.5
ARC 30 MN	42	16	28	27	80	14x9x12	60	95.5	71.5	35.2	40	40	-	M8x10	-	12	M6x8.5
ARC 35 MN	48	18	34	32	80	14x9x12	70	111.2	86.2	40.4	50	50	-	M8x13	-	14	M6x10
ARC 45 MN	60	20.5	45	39	105	20x14x17	86	135.5	102.5	50.7	60	60	-	M10x17	-	14	PT1/8x12.5
ARC 55 MN	70	23.5	53	45.7	120	24x16x20	100	168.5	126.5	58	75	75	-	M12x20	-	16	M6x10

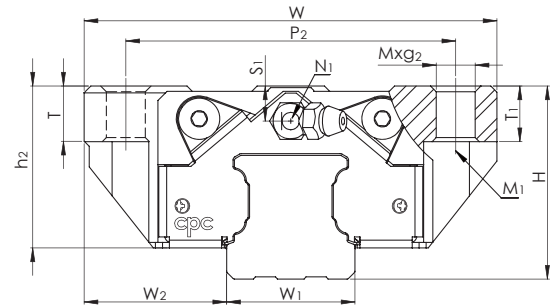
ARC ML Series

ARC 15 ML	24	9.5	15	15	60	7.5x4.5x5.3	34	76.2	61	20.7	34	26	-	M4x7	-	6	M3x6.5
ARC 20 ML	28	11	20	20	60	9.5x6x8.5	42	87.2	70.2	23	45	32	-	M5x7	-	8	M3x7.5
ARC 30 ML	42	16	28	27	80	14x9x12	60	118	94	35.2	60	40	-	M8x10	-	12	M6x8.5
ARC 35 ML	48	18	34	32	80	14x9x12	70	136.6	111.6	40.4	72	50	-	M8x13	-	14	M6x10
ARC 45 ML	60	20.5	45	39	105	20x14x17	86	171.5	138.5	50.7	80	60	-	M10x17	-	14	PT1/8x12.5
ARC 55 ML	70	23.5	53	45.7	120	24x16x20	100	202	160	58	95	75	-	M12x20	-	16	M6x10

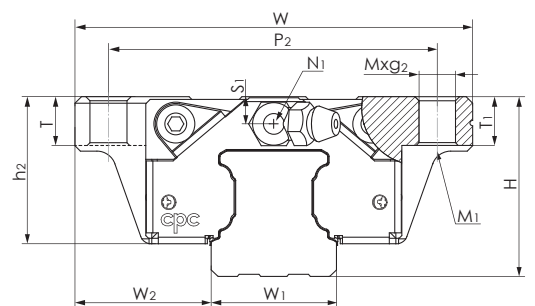
1. The load capacities is for full-ball type (without ball chain)
 3. N₃ = O-ring size for lubrication from above

2. N₂ = Injecting holes
 4. N₂, N₃ will be sealed before shipment, please open it when first using the product.

Dimensions Table



Suitable for ARC30 FS \ FN
ARC35 FN



Suitable for ARC15 FS \ FN
ARC20 FS \ FN
ARC25 FS \ FN

ARC FS Series

Model Code	Mounting Dimensions		Rail Dimensions(mm)				Block Dimensions(mm)												
	H	W2	W1	H1	P	Dx dxg1	W	L	L1	h2	P1	P2	P3	Mxg2	M1	T	T1	N1	
ARC 15 FS	24	18.5	15	15	60	7.5x4.5x5.3	52	41.2	26	20.7	-	41	-	M5x7	M4	7	7	M3x6.5	
ARC 20 FS	28	19.5	20	20	60	9.5x6x8.5	59	49.2	32.2	23	-	49	-	M6x10	M5	10	10	M3x7.5	
ARC 25 FS	33	25	23	23	60	11x7x9	73	57.4	38.4	27	-	60	-	M8x10	M6	12	10	M6x7.5	
ARC 30 FS	42	31	28	27	80	14x9x12	90	68	44	35.2	-	72	-	M10x12	M8	12	12	M6x8.5	

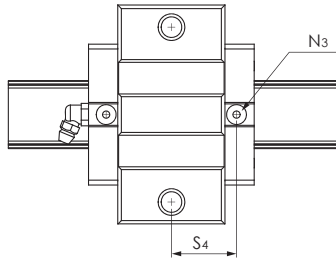
ARC FN Series

ARC 15 FN	24	18.5	15	15	60	7.5x4.5x5.3	52	55.5	40.3	20.7	26	41	-	M5x7	M4	7	7	M3x6.5
ARC 20 FN	28	19.5	20	20	60	9.5x6x8.5	59	69	52	23	32	49	-	M6x10	M5	10	10	M3x7.5
ARC 25 FN	33	25	23	23	60	11x7x9	73	81.2	62.2	27	35	60	-	M8x10	M6	12	10	M6x7.5
ARC 30 FN	42	31	28	27	80	14x9x12	90	95.5	71.5	35.2	40	72	-	M10x12	M8	12	12	M6x8.5
ARC 35 FN	48	33	34	32	80	14x9x12	100	111.2	86.2	40.4	50	82	-	M10x13	M8	13	13	M6x10

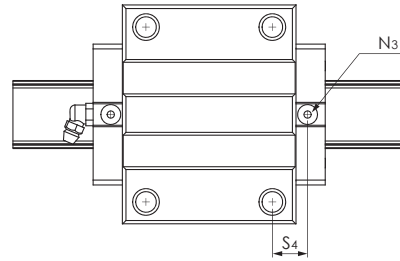
1. The load capacities is for full-ball type (without ball chain)
3. N3 = O-ring size for lubrication from above

2. N2 = Injecting holes
4. N2, N3 will be sealed before shipment, please open it when first using the product.

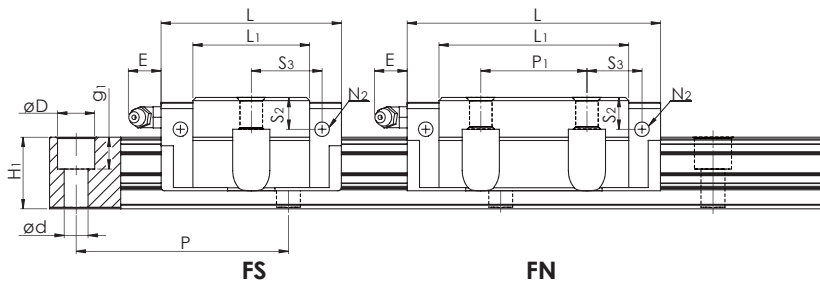
LINEAR MOTION TECHNOLOGY



Suitable for _RC_ _FS



Suitable for _RC_ _FN

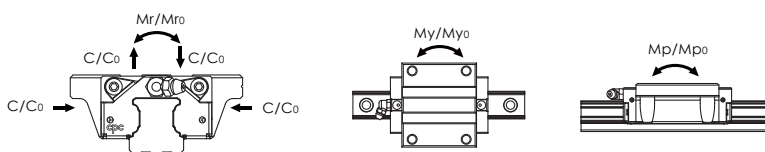


FS

FN

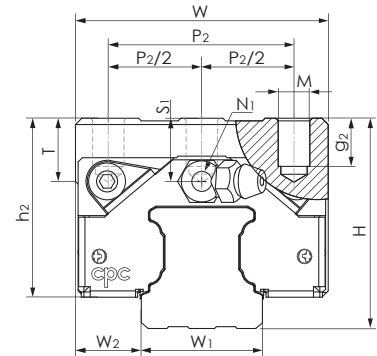
Block Dimensions(mm)							Load Capacities (KN)		Static Moment (Nm)			Weight		Model Code
N2	N3	E	S1	S2	S3	S4	C	C0	Mr0	Mp0	My0	Block(g)	Rail(g/m)	
M3x6	P3	3.5	4.5	7.5	15.6	16.7	7.7	12.1	100	50	50	132	1290	ARC 15 FS
M3x5.5	P4	10	4	7.4	19.1	19.8	12.5	19.3	205	100	100	210	2280	ARC 20 FS
M3x6.5	P4	12	5	9.3	22.2	23.2	18.2	27.3	350	160	160	345	3020	ARC 25 FS
M6x5	P5	12	7.5	12	27	26.8	23.3	33.1	520	230	230	750	4380	ARC 30 FS

M3x6	P3	3.5	4.5	7.5	8.9	10.9	9.9	17.5	140	105	105	200	1290	ARC 15 FN
M3x5.5	P4	10	4	7.4	13	13.7	17.1	30.0	325	230	230	336	2280	ARC 20 FN
M3x6.5	P4	12	5	9.3	16.6	17.6	24.8	42.5	540	385	385	524	3020	ARC 25 FN
M6x5	P5	12	7.5	12	20.8	20.5	32.8	53.7	845	565	565	1200	4380	ARC 30 FN
M6x7	P5	12	8	15	23.4	24.1	45.9	82.9	1700	1080	1080	1580	6790	ARC 35 FN



The above rating load capacities and static moments are calculated according to the ISO14728 standard. The rating life for basic dynamic load ratings is defined as the total 100km travel distance for 90% of a group of identical linear guides, under the same conditions and free from any material damage caused by rolling fatigue. If a standard of 50km travel distance is applied to measure the average product lifespan, the above basic dynamic load rating C should be multiplied by 1.26 for an accurate conversion.

Dimensions Table



HRC MN Series

Model Code	Mounting Dimensions		Rail Dimensions(mm)				Block Dimensions(mm)											
	H	W ₂	W ₁	H ₁	P	Dx dxg ₁	W	L	L ₁	h ₂	P ₁	P ₂	P ₂ /2	P ₃	M x G ₂	M ₁	T	N ₁
HRC 15 MN	28	9.5	15	15	60	7.5x4.5x5.3	34	55.5	40.3	24.7	26	26	-	-	M4x7	-	6	M3x6.5
HRC 15 MN-R													13	26				
HRC 20 MN	30	12	20	20	60	9.5x6x8.5	44	69	52	25	36	32	-	-	M5x8.5	-	8	M3x7.5
HRC 20 MN-R													16	36				
HRC 25 MN	40	12.5	23	23	60	11x7x9	48	81.2	62.2	34	35	35	-	-	M6x9	-	12	M6x7.5
HRC 25 MN-R													17.5	35				
HRC 30 MN	45	16	28	27	80	14x9x12	60	95.5	71.5	38.2	40	40	-	-	M8x12	-	12	M6x8.5
HRC 30 MN-R													20	40				
HRC 35 MN	55	18	34	32	80	14x9x12	70	111.2	86.2	47.4	50	50	-	-	M8x13	-	14	M6x10
HRC 35 MN-R													25	50				
HRC 45 MN	70	20.5	45	39	105	20x14x17	86	135.5	102.5	60.7	60	60	-	-	M10x20	-	14	PT1/8x12.5
HRC 45 MN-R													30	60				
HRC 55 MN	80	23.5	53	45.7	120	24x16x20	100	168.5	126.5	68	75	75	-	-	M12x25	-	16	M6x10
HRC 55 MN-R													37.5	75				

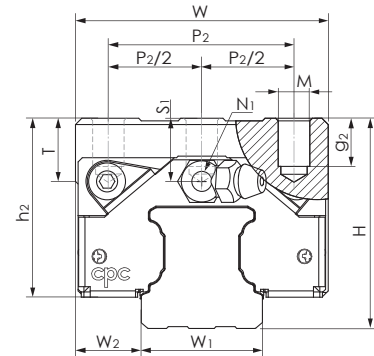
ERC MN Series

ERC 25 MN	36	12.5	23	23	60	11x7x9	48	81.2	62.2	30	35	35	-	-	M6x9	-	8	M6x7.5
ERC 25 MN-R													17.5	35				

1. The load capacities is for full-ball type (without ball chain)
3. N₃ = O-ring size for lubrication from above

2. N₂ = Injecting holes
4. N₂, N₃ will be sealed before shipment, please open it when first using the product.

Dimensions Table



HRC ML Series

Model Code	Mounting Dimensions		Rail Dimensions(mm)				Block Dimensions(mm)											
	H	W ₂	W ₁	H ₁	P	Dxdxg ₁	W	L	L ₁	h ₂	P ₁	P ₂	P ₂ /2	P ₃	MxG ₂	M ₁	T	N ₁
HRC 15 ML	28	9.5	15	15	60	7.5x4.5x5.3	34	76.2	61	24.7	26	26	-	-	M4x7	-	6	M3x6.5
HRC 15 ML-R													13	26				
HRC 20 ML	30	12	20	20	60	9.5x6x8.5	44	87.2	70.2	25	50	32	-	-	M5x8.5	-	8	M3x7.5
HRC 20 ML-R													26	50				
HRC 25 ML	40	12.5	23	23	60	11x7x9	48	105	86	34	50	35	-	-	M6x9	-	12	M6x7.5
HRC 25 ML-R													17.5	50				
HRC 30 ML	45	16	28	27	80	14x9x12	60	118	94	38.2	60	40	-	-	M8x12	-	12	M6x8.5
HRC 30 ML-R													20	60				
HRC 35 ML	55	18	34	32	80	14x9x12	70	136.6	111.6	47.4	72	50	-	-	M8x13	-	14	M6x10
HRC 35 ML-R													25	72				
HRC 45 ML	70	20.5	45	39	105	20x14x17	86	171.5	138.5	60.7	80	60	-	-	M10x20	-	14	PT1/8x12.5
HRC 45 ML-R													30	80				
HRC 55 ML	80	23.5	53	45.7	120	24x16x20	100	202	160	68	95	75	-	-	M12x25	-	16	M6x10
HRC 55 ML-R													37.5	95				

ERC Series

ERC 25 M L	36	12.5	23	23	60	11x7x9	48	105	86	30	50	35	-	-	M6x9	-	8	M6x7.5
ERC 25 M L-R													17.5	50				

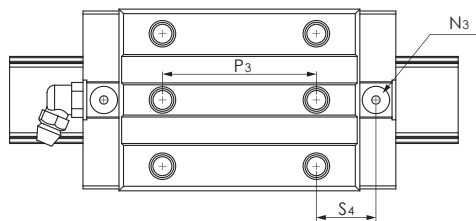
1. The load capacities is for full-ball type (without ball chain)

3. N₃ = O-ring size for lubrication from above

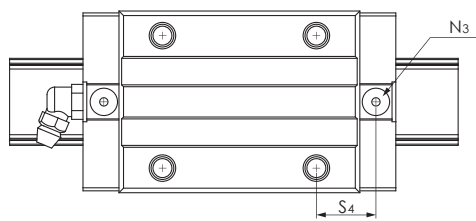
2. N₂ = Injecting holes

4. N₂, N₃ will be sealed before shipment, please open it when first using the product.

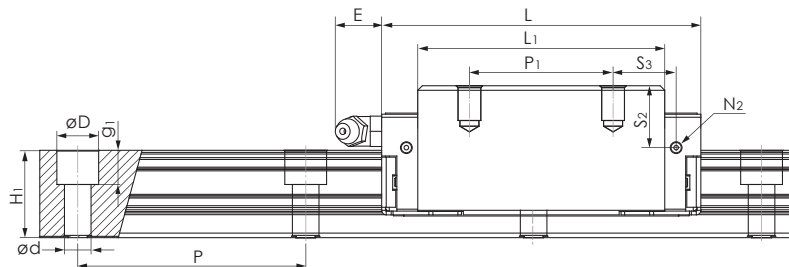
LINEAR MOTION TECHNOLOGY



Suitable for _RC_ _ML-R

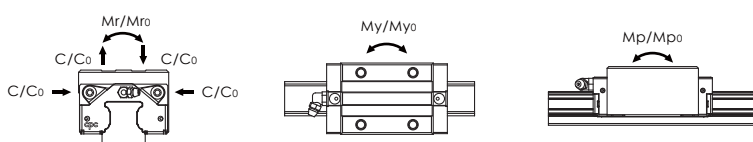


Suitable for _RC_ _ML



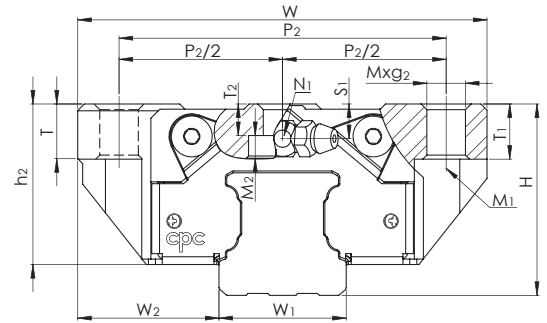
Block Dimensions (mm)							Load Capacities (KN)		Static Moment (Nm)			Weight		Model Code
N2	N3	E	S1	S2	S3	S4	C	C0	Mr0	Mp0	My0	Block(g)	Rail(g/m)	
M3x6	P3	3.5	8.5	11.5	20.1	21.2	13.4	26.9	215	235	235	300	1290	HRC 15 ML
												280		HRC 15 ML-R
M3x5.5	P4	10	6	9.4	13.1	13.8	20.4	38.5	415	390	390	400	2280	HRC 20 ML
												370		HRC 20 ML-R
M3x6.5	P4	12	12	16.3	21	22	30.7	57.7	735	710	710	685	3020	HRC 25 ML
												645		HRC 25 ML-R
M6x5	P5	12	10.5	15	21.7	21.8	39.6	70.2	1105	950	950	1150	4380	HRC 30 ML
												1100		HRC 30 ML-R
M6x7	P5	12	15	22	25.1	25.8	54.7	106.5	2185	1755	1755	1953	6790	HRC 35 ML
												1800		HRC 35 ML-R
M6x10.5	P5	14	21.1	28.1	35.3	35.3	89.5	169.1	4430	3460	3460	4060	10530	HRC 45 ML
												3950		HRC 45 ML-R
M6x13	P5	12	23.5	33.5	41.5	40.5	147	226	6472	5284	5284	6243	14000	HRC 55 ML
												6050		HRC 55 ML-R

M3x6.5	P4	12	8	12.3	21	22	30.7	57.7	735	710	710	610	3020	ERC 25 M L
												570		ERC 25 M L-R

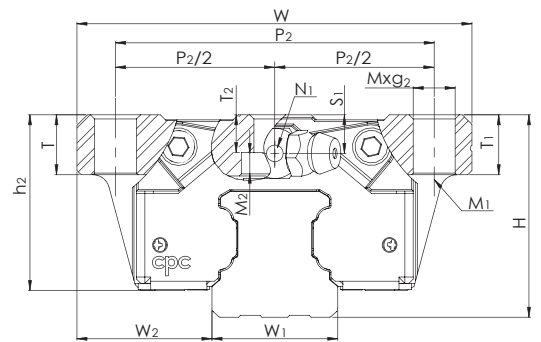


The above rating load capacities and static moments are calculated according to the ISO14728 standard. The rating life for basic dynamic load ratings is defined as the total 100km travel distance for 90% of a group of identical linear guides, under the same conditions and free from any material damage caused by rolling fatigue. If a standard of 50km travel distance is applied to measure the average product lifespan, the above basic dynamic load rating C should be multiplied by 1.26 for an accurate conversion.

Dimensions Table



Suitable for HRC30 FN \ FN-R
HRC35 FN \ FN-R
HRC55 FN



Suitable for HRC15 FN \ FN-R
HRC20 FN \ FN-R
HRC25 FN \ FN-R
HRC45 FN \ FN-R

HRC FN Series

Model Code	Mounting Dimensions		Rail Dimensions(mm)				Block Dimensions(mm)													
	H	W ₂	W ₁	H ₁	P	Dx dxg ₁	W	L	L ₁	h ₂	P ₁	P ₂	P ₂ /2	P ₃	Mxg ₂	M ₁	M ₂	T	T ₁	T ₂
HRC 15 FN	24	16	15	15	60	7.5x4.5x5.3	47	55.5	40.3	20.7	30	38	-	-	M5x7	M4	-	7	7	-
HRC 15 FN-R													19	26			2.8			4.4
HRC 20 FN	30	21.5	20	20	60	9.5x6x8.5	63	69	52	25	40	53	-	-	M6x10	M5	-	10	10	-
HRC 20 FN-R													26.5	35			3.5			4.5
HRC 25 FN	36	23.5	23	23	60	11x7x9	70	81.2	62.2	30	45	57	-	-	M8x10	M6	-	12	10	-
HRC 25 FN-R													28.5	40			4			6.4
HRC 30 FN	42	31	28	27	80	14x9x12	90	95.5	71.5	35.2	52	72	-	-	M10x12	M8	-	12	12	-
HRC 30 FN-R													36	44			5			6.9
HRC 35 FN	48	33	34	32	80	14x9x12	100	111.2	86.2	40.4	62	82	-	-	M10x13	M8	-	13	13	-
HRC 35 FN-R													41	52			5			7.4
HRC 45 FN	60	37.5	45	39	105	20x14x17	120	135.5	102.5	50.7	80	100	-	-	M12x15	M10	-	18	15	-
HRC 45 FN-R													50	60			6			9.9
HRC 55 FN	70	43.5	53	45.7	120	24x16x20	140	168.5	126.5	58	95	116	58	70	M14x18	M12	13	18	18	9.4

1. The load capacities is for full-ball type (without ball chain)

3. N₃ = O-ring size for lubrication from above

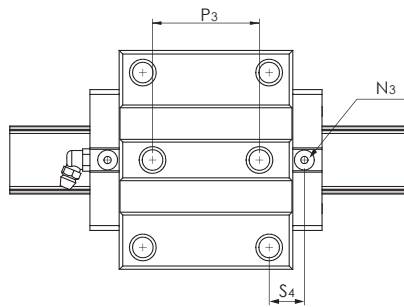
5. Mxg₂, M₁: Screw size based on ISO 4762-12.9

6. M₂ abdomen countersunk head screw size according to DIN 7984-8.8

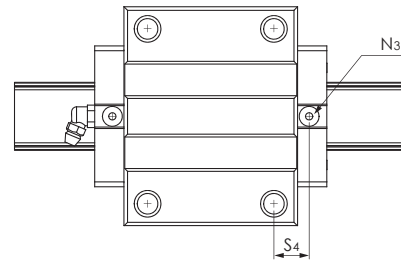
2. N₂ = Injecting holes

4. N₂, N₃ will be sealed before shipment, please open it when first using the product.

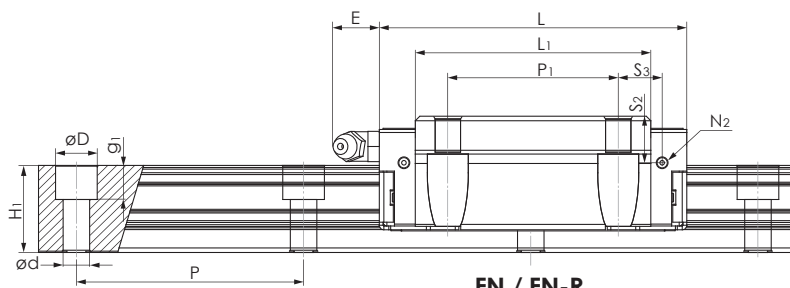
LINEAR MOTION TECHNOLOGY



Suitable for _RC_ _FN-R

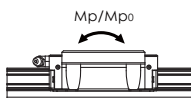
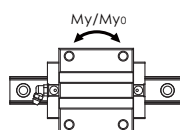
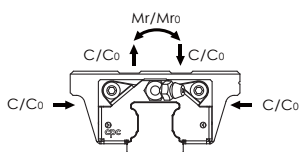


Suitable for _RC_ _FN



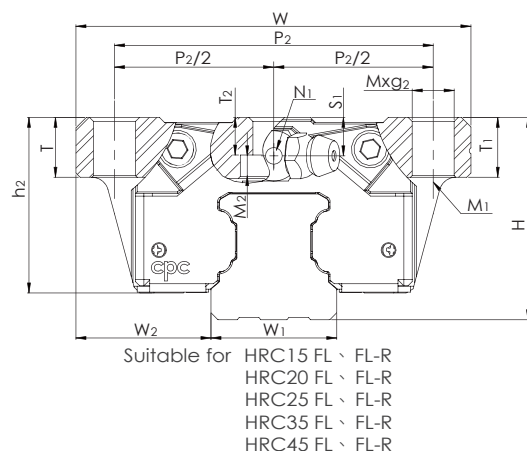
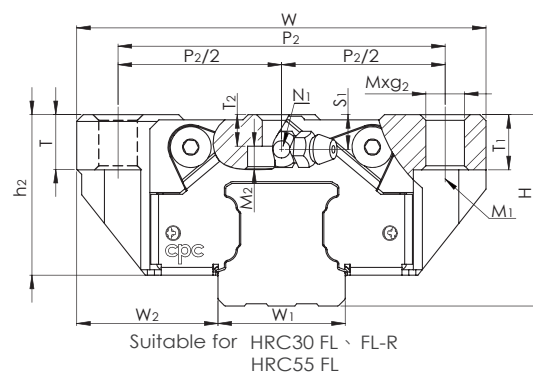
FN / FN-R

Block Dimensions(mm)								Load Capacities (KN)		Static Moment (Nm)			Weight		Model Code
N1	N2	N3	E	S1	S2	S3	S4	C	C0	Mr0	Mp0	My0	Block(g)	Rail(g/m)	
M3x6.5	M3x6	P3	3.5	4.5	7.5	7.8	8.9	9.9	17.5	140	105	105	190	1290	HRC 15 FN
													175		HRC 15 FN-R
M3x7.5	M3x5.5	P4	10	6	9.4	9	9.7	17.1	30.0	325	230	230	396	2280	HRC 20 FN
													375		HRC 20 FN-R
M6x7.5	M3x6.5	P4	12	8	12.3	11.6	12.6	24.8	42.5	540	385	385	626	3020	HRC 25 FN
													550		HRC 25 FN-R
M6x8.5	M6x5	P5	12	7.5	12	14.8	14.5	32.8	53.7	845	565	565	1110	4380	HRC 30 FN
													1000		HRC 30 FN-R
M6x10	M6x7	P5	12	8	15	17.4	18.1	45.9	82.9	1700	1080	1080	1550	6790	HRC 35 FN
													1400		HRC 35 FN-R
PT1/8x12.5	M6x10.5	P5	14	11.1	18.1	17.3	17.3	71.3	122.1	3200	1910	1910	2747	10530	HRC 45 FN
													2550		HRC 45 FN-R
M6x10	M6x13	P5	12	13.5	23.5	24.8	23.8	128	186	4949	3278	3278	5440	14000	HRC 55 FN



The above rating load capacities and static moments are calculated according to the ISO14728 standard. The rating life for basic dynamic load ratings is defined as the total 100km travel distance for 90% of a group of identical linear guides, under the same conditions and free from any material damage caused by rolling fatigue. If a standard of 50km travel distance is applied to measure the average product lifespan, the above basic dynamic load rating C should be multiplied by 1.26 for an accurate conversion.

Dimensions Table



HRC FL Series

Model Code	Mounting Dimensions		Rail Dimensions(mm)				Block Dimensions(mm)													
	H	W ₂	W ₁	H ₁	P	Dxdxg ₁	W	L	L ₁	h ₂	P ₁	P ₂	P ₂ /2	P ₃	Mxg ₂	M ₁	M ₂	T	T ₁	T ₂
HRC 15 FL	24	16	15	15	60	7.5x4.5x5.3	47	76.2	61	20.7	30	38	-	-	M5x7	M4	-	7	7	-
HRC 15 FL-R													19	26			2.8			4.4
HRC 20 FL	30	21.5	20	20	60	9.5x6x8.5	63	87.2	70.2	25	40	53	-	-	M6x10	M5	-	10	10	-
HRC 20 FL-R													26.5	35			3.5			4.5
HRC 25 FL	36	23.5	23	23	60	11x7x9	70	105	86	30	45	57	-	-	M8x10	M6	-	12	10	-
HRC 25 FL-R													28.5	40			4			6.4
HRC 30 FL	42	31	28	27	80	14x9x12	90	118	94	35.2	52	72	-	-	M10x12	M8	-	12	12	-
HRC 30 FL-R													36	44			5			6.9
HRC 35 FL	48	33	34	32	80	14x9x12	100	136.6	111.6	40.4	62	82	-	-	M10x13	M8	-	13	13	-
HRC 35 FL-R													41	52			5			7.4
HRC 45 FL	60	37.5	45	39	105	20x14x17	120	171.5	138.5	50.7	80	100	-	-	M12x15	M10	-	18	15	-
HRC 45 FL-R													50	60			6			9.9
HRC 55 FL	70	43.5	53	45.7	120	24x16x20	140	202	160	58	95	116	58	70	M14x18	M12	13	18	18	9.4

1. The load capacities is for full-ball type (without ball chain)

3. N₃ = O-ring size for lubrication from above

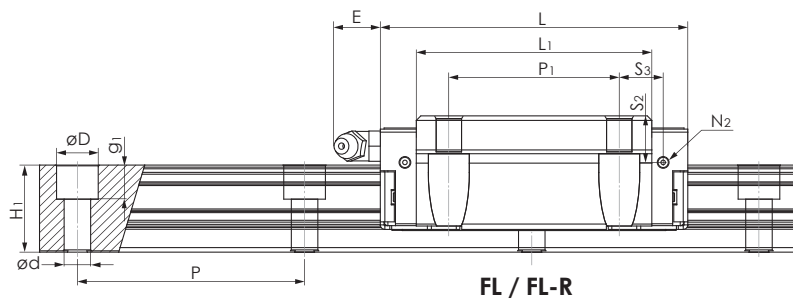
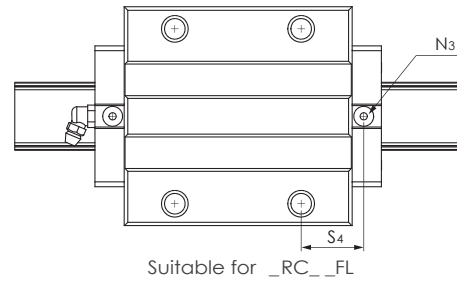
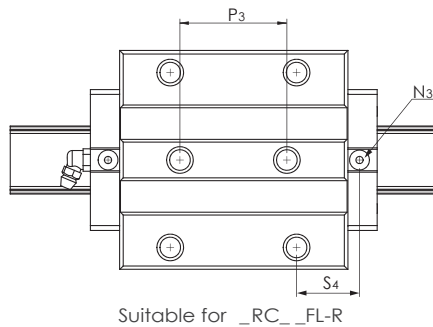
5. Mxg₂, M₁: Screw size based on ISO 4762-12.9

6. M₂ abdomen countersunk head screw size according to DIN 7984-8.8

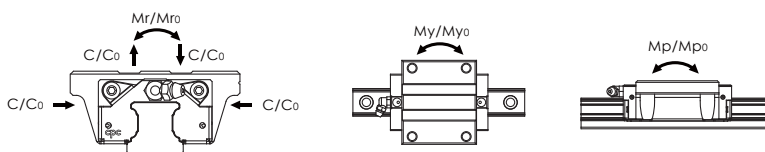
2. N₂ = Injecting holes

4. N₂, N₃ will be sealed before shipment, please open it when first using the product.

LINEAR MOTION TECHNOLOGY

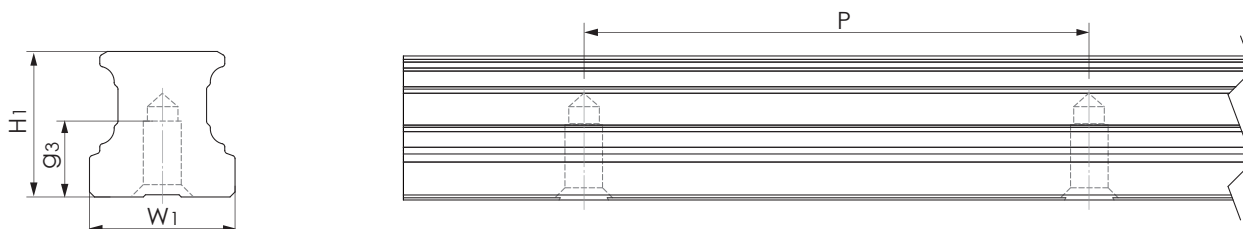


Block Dimensions(mm)								Load Capacities (KN)		Static Moment (Nm)			Weight		Model Code
N1	N2	N3	E	S1	S2	S3	S4	C	C0	Mr0	Mp0	My0	Block(g)	Rail(g/m)	
M3x6.5	M3x6	P3	3.5	4.5	7.5	18.1	19.2	13.4	26.9	215	235	235	290	1290	HRC 15 FL
													270		HRC 15 FL-R
M3x7.5	M3x5.5	P4	10	6	9.4	18.1	18.8	20.4	38.5	415	390	390	504	2280	HRC 20 FL
													475		HRC 20 FL-R
M6x7.5	M3x6.5	P4	12	8	12.3	23.5	24.5	30.7	57.5	735	710	710	870	3020	HRC 25 FL
													810		HRC 25 FL-R
M6x8.5	M6x5	P5	12	7.5	12	25.7	25.8	39.6	70.2	1105	950	950	1385	4380	HRC 30 FL
													1290		HRC 30 FL-R
M6x10	M6x7	P5	12	8	15	30.1	30.8	54.7	106.5	2185	1755	1755	2000	6790	HRC 35 FL
													1800		HRC 35 FL-R
PT1/8x12.5	M6x10.5	P5	14	11.1	18.1	35.3	35.3	89.5	169.1	4430	3460	3460	4280	10530	HRC 45 FL
													4050		HRC 45 FL-R
M6x10	M6x13	P5	12	13.5	23.5	41.5	40.5	147	226	6472	5284	5284	6963	14000	HRC 55 FL



The above rating load capacities and static moments are calculated according to the ISO 14728 standard. The rating life for basic dynamic load ratings is defined as the total 100km travel distance for 90% of a group of identical linear guides, under the same conditions and free from any material damage caused by rolling fatigue. If a standard of 50km travel distance is applied to measure the average product lifespan, the above basic dynamic load rating C should be multiplied by 1.26 for an accurate conversion.

Dimensions Table



Rail (tapped from the bottom)

Model Code	W1	H1	P	Mxg3	Lmax	Rail(g/m)
ARU 15	15	15	60	M5x8	4000	1290
ARU 20	20	20	60	M6x10	4000	2280
ARU 25	23	23	60	M6x12	4000	3020
ARU 30	28	27	80	M8x15	4000	4380
ARU 35	34	32	80	M8x15	4000	6790
ARU 45	45	39	105	M12x19	4000	10530
ARU 55	53	45.7	120	M14x24	4000	14060

Nipple Option

Type				Nipple size		Grease nipple	Optional			
				Section	Side		Standard	Straight adapter	Tube diameter	L-Type adapter
Ball	ARC15	HRC15	-	M3	M3	A-M3	OA-M3-D4	-	OB-M3-M6	-
	ARC20	HRC20	-	M3	M3	B-M3	OA-M3-D4	-	OB-M3-M6	-
	ARC25	HRC25	ERC25	M6	M3	A/B-M6	OA-M6-M8	Ø4	OB-M6-M8	Ø4
	ARC30	HRC30	-	M6	M6	A/B-M6	OA-M6-M8	Ø4	OB-M6-M8	Ø4
							OA-M6-PT1/8	-	OB-M6-PT1/8	-
	ARC35	HRC35	-	M6	M6	A/B-M6	OA-M6-G1/8	Ø6	OB-M6-PT1/8	-
							OA-M6-M8	Ø4	OB-M6-M8	-
							OA-M6-PT1/8	-	OB-M6-PT1/8	-
	ARC45	HRC45	-	PT1/8	M6	B-PT1/8	OA-M6-G1/8	Ø6	OB-M6-PT1/8	-
							OA-PT1/8-M8	Ø4	OB-PT1/8-M8	Ø4
OA-PT1/8-PT1/8							-	OB-PT1/8-PT1/8	-	
ARC55	HRC55	-	M6	M6	A/B-M6	OA-PT1/8-G1/8	Ø6	OB-PT1/8-PT1/8	-	
						OA-M6-M8	Ø4	OB-M6-M8	Ø4	
						OA-M6-PT1/8	-	OB-M6-PT1/8	-	
Roller	ARR35	HRR35	LRR35	M6	M6	A/B-M6-L	OA-M6-G1/8	Ø6	OB-M6-PT1/8	-
							OA-M6-M8-L	Ø4	OB-M6-M8-L	Ø4
							OA-M6-PT1/8-L	-	OB-M6-PT1/8-L	-
	ARR45	HRR45	LRR45	M6	M6	A/B-M6-L	OA-M6-G1/8-L	Ø6	OB-M6-PT1/8-L	-
							OA-M6-M8-L	Ø4	OB-M6-M8-L	Ø4
							OA-M6-PT1/8-L	-	OB-M6-PT1/8-L	-

* When external NRB seal is chosen (SN), please use long type grease nipple for ball type product, extra long type grease nipple for roller type product.